

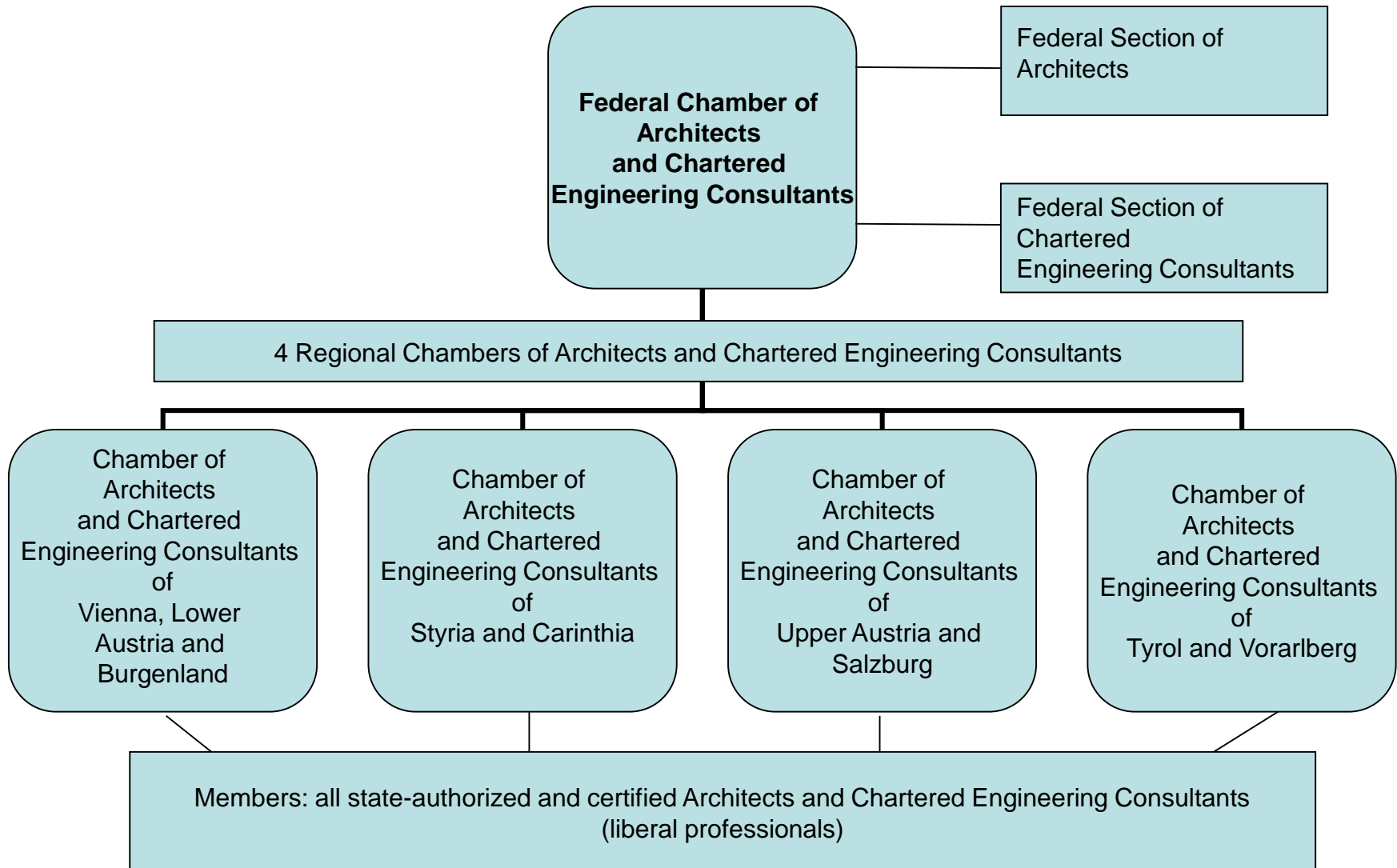
The Austrian Federal Chamber of Architects and Chartered Engineering Consultants

Presentation Klaus Thürriedl

President of the Federal Section of
Chartered Engineering Consultants

Secretary General of ECEC

March 2015



Chambers of Architects and Chartered Engineering Consultants

- **Legal basis: Chamber Act
(Ziviltechnikerkammergesetz 1993 - ZTKG)**
- **Corporate bodies under public law**
- **Statutory professional representation associations**
- **Representation by honorary, elected professional
representatives (election every 4 years)**
- **Membership mandatory for Architects and
Chartered Engineering Consultants**

Authorization

- **The authorization to practice as an Architect or Chartered Engineering Consultant is awarded by the Federal Minister of Science, Research and Economy**
- **Chartered Engineering Consultants are active in more than 70 specialists areas**
- **The authorization may be exercised by natural persons or by companies of state - authorized and certified Architects and Chartered Engineering Consultants**
- **The authorization requires a university degree, three years of practice and a professional examination**

EU/EEA/Swiss Chartered Engineering Consultants Requirements for provision of services in Austria

- **Evidence of nationality (EU/EEA/Switzerland)**
- **Evidence of authorization to practice as a liberal professional Architect/Chartered Engineering Consultant and of establishment in an EU/EEA Member State / Switzerland**
- **Documentation of formal professional qualification/diploma**
- **Obligation to supply the client with all relevant documents before the provision of services**

No obligation to notify / register!

EU/EEA/Swiss Chartered Engineering Consultants Requirements for establishment in Austria

- **Application for an authorization at one Regional Chamber of Architects and Chartered Engineering Consultants**
- **Documentation i.e. formal professional qualification / diploma, evidence of nationality, non bankruptcy, reliability**

If the applicant's qualification is not equivalent to the requirements in Austria, according to the EU-directive, a training course with a duration of up to 2 years / a verbal aptitude test will be required.

Professional recognition in Europe - current developments and possibilities for cooperation

- National implementation period of new Professional Qualifications Directive until 18 January 2016
- Important aspects for engineering professions:
 - Possibility to establish Common Training Frameworks / Common Training Tests
 - Possibility to establish Professional Card for Engineers
 - Transparency initiative

Common Training Frameworks / Common Training Tests

- **Foreseen in the new Professional Qualifications Directive**
- **CTF = common set of minimum knowledge, skills and competences necessary for the pursuit of a specific profession**
- **Professional organizations whose members belong to at least one third of the Member states (like ECEC) are allowed to present a proposal for a CTF/CTT to the European Commission**

Common Training Frameworks / Common Training Tests

- Important possibility to gain „automatic recognition“ for engineering professions
- BUT: Skills and competences can be acquired as part at university or also as part of a vocational training course
- Important:
 - Cooperation of national Chambers /competent authorities in defining Common Training Frameworks / Common Training Tests that can guarantee quality engineering services
 - Consideration of the differences between Chartered and Employed Engineers

Professional Card for Engineers

- **Professional Card is not a “card” but an electronic file within the IMI system**
- **Simplification of professional recognition procedures with closer involvement of home member states**
- **Professional Card for Engineers has been postponed by the European Commission until 2018**
- **Important:**
 - **Issuing of professional Cards only by competent authorities via the IMI system**
 - **Cooperation of national Chambers /competent authorities for establishment and application of the Card**

Transparency Initiative

- **Based on Professional Qualifications Directive**
- **Requires all member states to evaluate their national professional regulations in regard to necessity and proportionality**
- **Can lead to infringement procedures**
- **Important:**
 - **Cooperation of national Chambers /competent authorities in showing and explaining the importance of professional regulations for Engineers**



European Council of Engineers' Chambers - ECEC

The ECEC is an important platform for information exchange and cooperation between national Engineering Chambers.

www.ecec.net

New members are welcome!